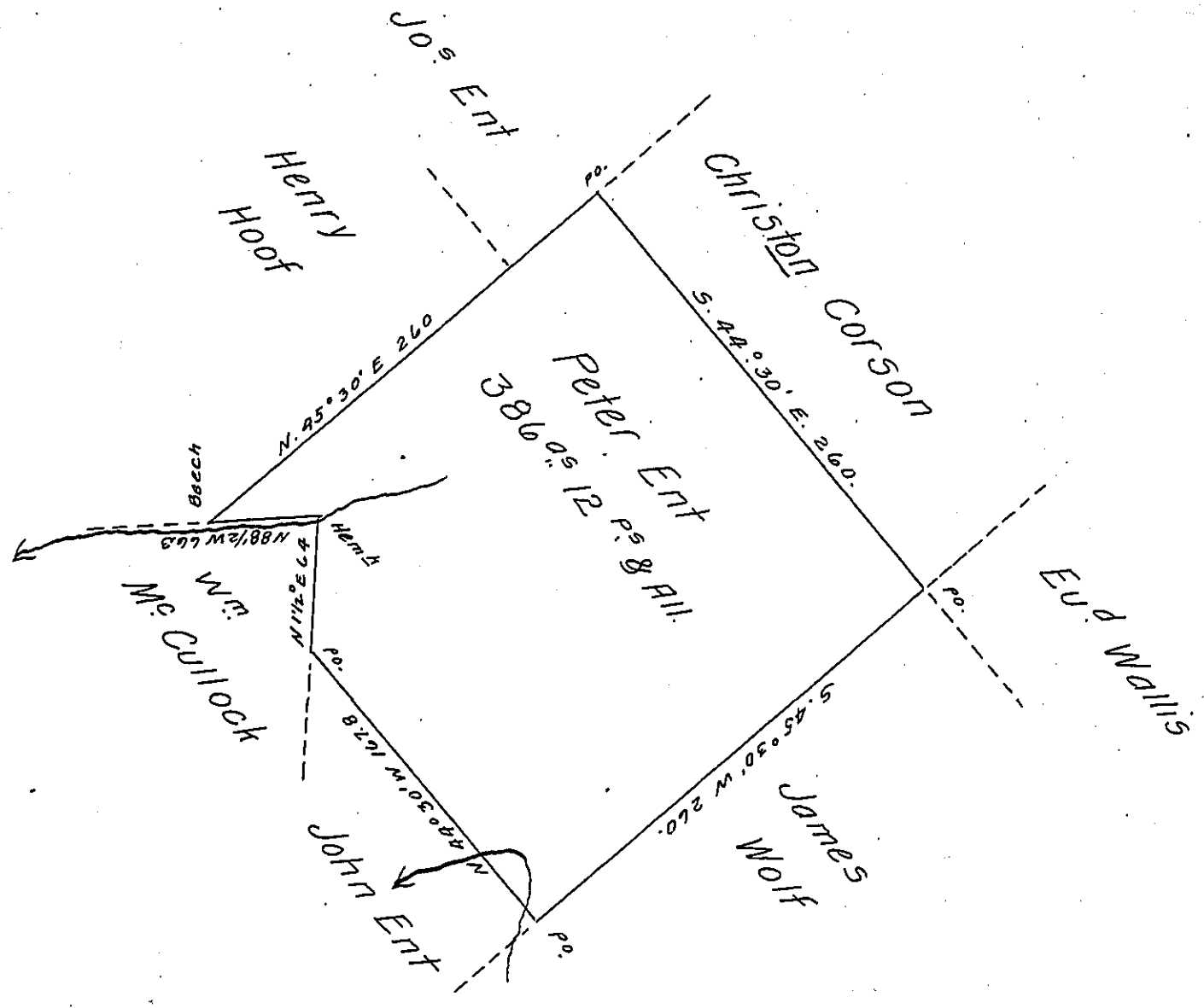


FORM No. 1.



Draft of a tract of Land Situate now in Falls township Luzerne County adjoining Joseph Ent and others. Containing three hundred eighty Six acres, twelve perches and allowance of six per ct. &c.

Surveyed the above described tract of Land the twelfth day of February A. D. 1842 for Peter Ent by Virtue of his warrant dated the fifth day of July A. D. 1792.

To Jacob Sallade Esq<sup>r</sup>  
S.G.

Henry Colt  
D.S.

IN TESTIMONY that the above is a copy of the original remaining on file in the Department of Internal Affairs of Pennsylvania, made conformably to an Act of Assembly approved the 16th day of February 1833, I have hereunto set my hand and caused the Seal of said Department to be affixed at Harrisburg, this thirteenth day of December 1907.

*Aurora Howell*  
Secretary of Internal Affairs.